



Digital technology improves life

UP400

Ultra-high-speed Scan

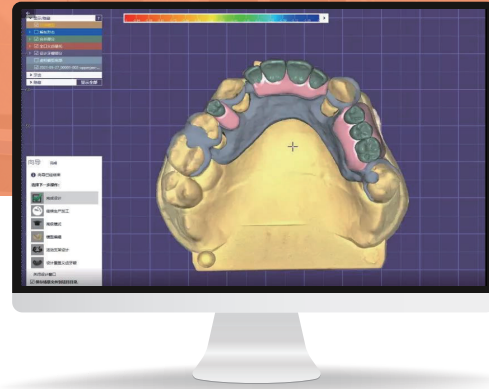


UP3D Scanner

Specializing in developing
scanners over 8 years

Open System, Better Integration Highly Restore the True Color of the Model to Help RPD Design

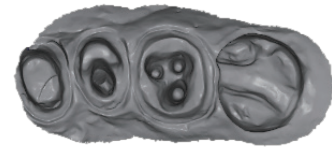
UP400 can provide you the true color images, Combined with a variety of design software such as exocad and 3Shape to achieve the easiest PRD design



With the Ultra-high-speed Scan Up400 Provides You the Better Scan Experience

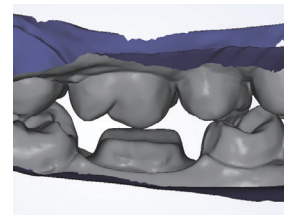
Post & core impression scanning

Only 33s



Triple Tray Impressions Scanning Only

Only 70s



UPSCAN

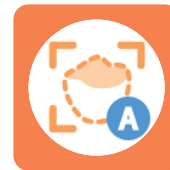
Upgrade Scan Software

New UI interface,
post-processing speed upgrade



Freely Switch Scanning Steps

Support freely switch scanning steps, no need to recreate the order, simple and convenient operation



Full Arch Automatic Add-scan

One click on the software can add-scan automatically



Fill Hole On Abutment

No need to add the wax manually,
the software fills the screw holes automatically



Mark Margin Line

Mark the margin line directly in the software after scanning,
reducing time of the tooth design.



UP400 Ultra-high-speed Scanner



Automatic add-scan



Open System

Support PLY format
Enables to import 3Shape
and exocad files directly



High Speed Scan

Only need 14s to scan
unsectioned model



Upgraded Upscan Software

Optimize the UI layout and upgrade
the core algorithm to deliver a faster scan
speed and less post-processing time.

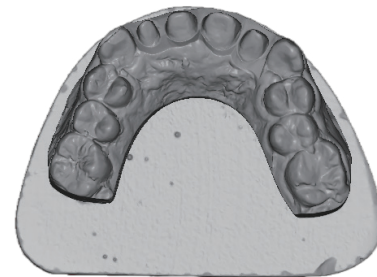
Ultra-high-speed Model Scanning

14s for Unsectioned Model, 11s for Sectioned Model

Powered by an upgraded software algorithm, UP400 can scan the model with high speed and improve your efficiency



Unsectioned model



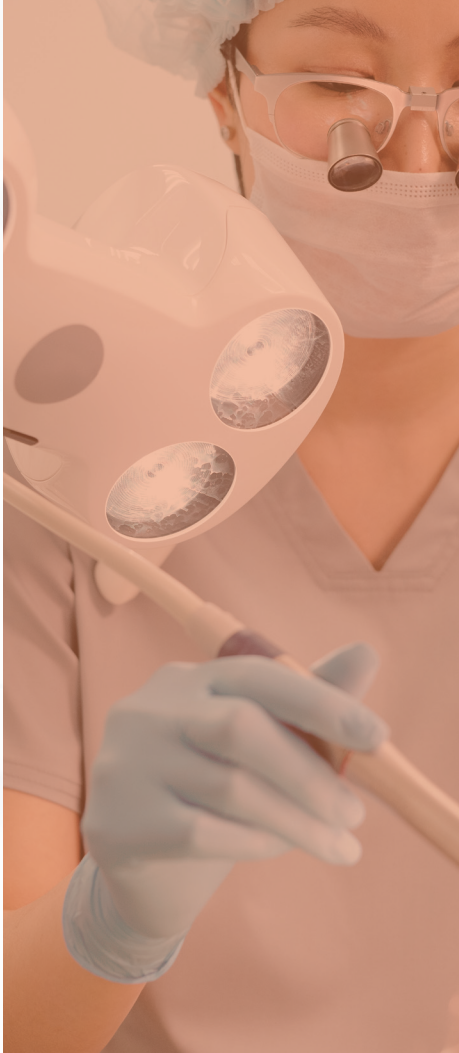
UP400 scan data

Parameters

UP3D Scanner



Model	UP400
Dimension	355*268*384mm
Weight	10kg
Cameras	2*1.3mp
Accuracy	8 microns
Projector	Customized blue-light / Multi-color scanning
Interface	USB 3.0
Output Formats	STL, UM, PLY, OBJ
Power Supply	AC110-240V, 50Hz
Product Features	All-in-one scan, One-click scanning triple tray Detect margin line, true color texture scan
Main Feature	Unsectioned models scan, All-in-one, smart add-scan
Scan Speed	Full arch: 11s Unsectioned models scan: 14s post&core scan: 33s All-in-one: 20s Triple tray: 70s True color texture scan: 16s




UP3D is a high tech company and the few companies in the world that are capable of developing a full dental CAD/CAM solution including software and hardware, from scanning, designing, to milling.

UP3D remains dedicated to our customers' requirements for training and support as well as for innovative, high-quality products that perform reliably. We have native technical support to deal with any after-sales problems for you to ensure that you can use our products happily.

CONTACT US

 www.up3ds.com

 info@up3d.cn

 +86-755-26983202

